



## *Attention General Contractors & Subcontractors*

### **NOTICE OF UPCOMING BID OPPORTUNITY**

**for the**

### **GOLETA VALLEY LIBRARY BUILDING, SAFETY, AND ADA IMPROVEMENT PROJECT**



#### **Project Overview:**

- Project Site: 500 North Fairview Avenue, Goleta, CA 93117
- Bid Release (anticipated): September 2025
- Contract Award (anticipated): November 2025
- Construction Cost Estimate: \$4.8 - 5.54m
- Architect: Jeffrey Miller Architecture and Design |JM+AD|
- Construction Manager: Kitchell CEM

The City of Goleta is seeking qualified contractors (CA B License) to bid on the upcoming renovation of the Goleta Valley Library. The facility was constructed in 1972 and consists of a single-story structure containing 15,437 square feet. The site and structure have not been significantly renovated since its initial construction. The project is designed to bring the building up to current code standards while improving accessibility, safety, and sustainability for the community. This project is primarily funded by a \$4.2 million grant from the California State Library Building Forward Facilities Improvement Program.

The renovation project includes ADA restroom renovations, interior and exterior path of travel alterations, electrical system replacement (including switchgear), HVAC system replacement, fire suppression system installation, LED lighting replacement and retrofits, ceiling system replacement, security and life safety system installation and upgrades, installation and replacement of doors, windows, and automatic door storefront systems, fascia replacement, interior alterations and improvements, and landscape improvements.

#### **Bid Information:**

The City of Goleta conducts all bid solicitations online through **PlanetBids™**. Interested contractors should register now at:

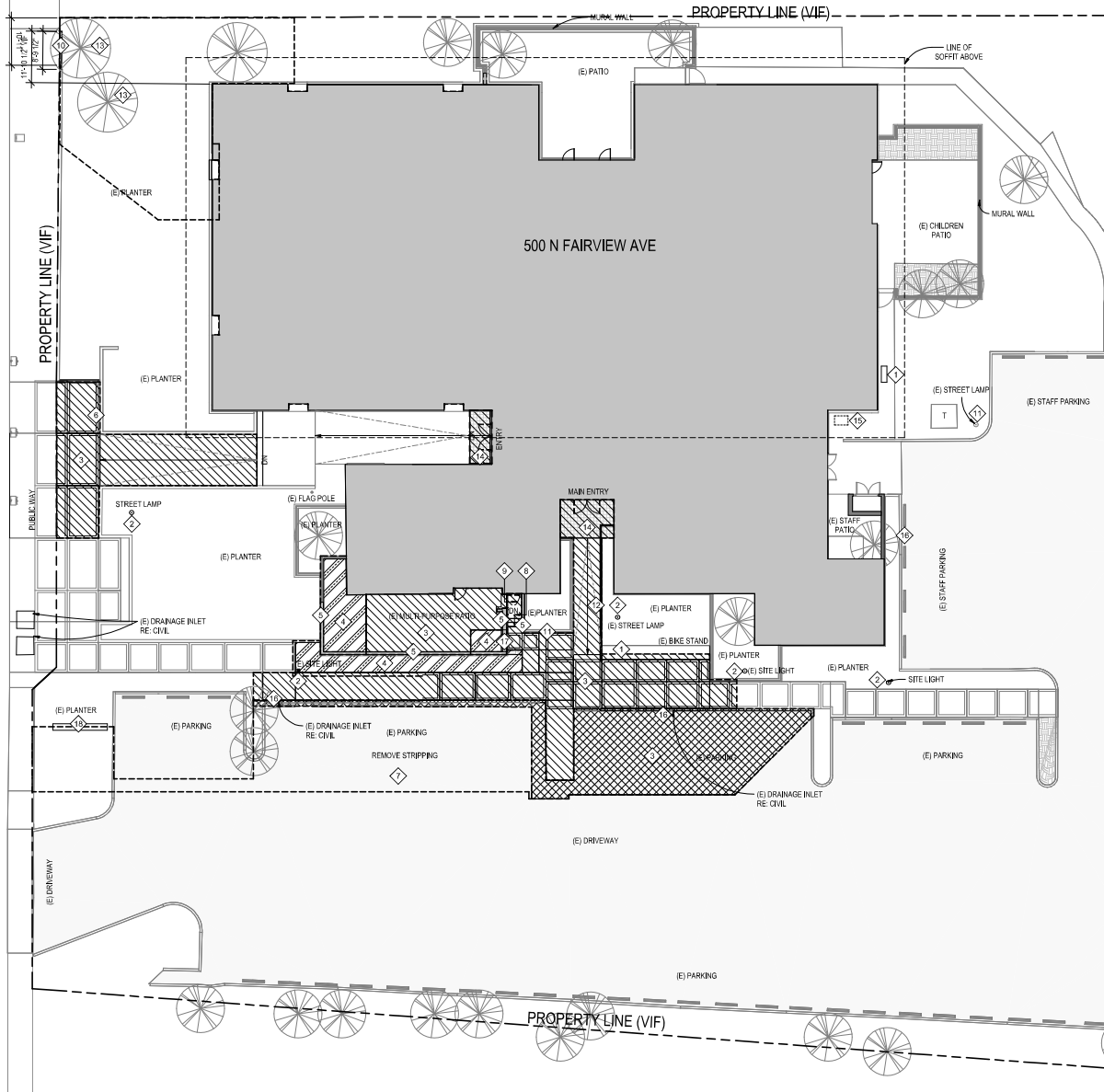
<https://pbsystem.planetbids.com/portal/45299/portal-home>

#### **Contact:**

For more information, contact Matthew Fore, General Services Director, at MFore@CityofGoleta.gov or visit:

<https://www.goletavalleylibrary.org/about/goleta-valley-library-improvement-project>

# EXTERIOR SITE DEMOLITION



## GENERAL DEMOLITION NOTES

- 1) INSPECTION: PRIOR TO THE START OF SELECTIVE DEMOLITION WORK, EXAMINE WORK TO BE REMOVED AND WORK TO REMAIN TO DETERMINE NATURE OF WORK AND CONDITIONS UNDER WHICH SELECTIVE DEMOLITION WILL BE CONDUCTED. MAKE NECESSARY EXPLORATIONS AND NON-DESTRUCTIVE PROBES TO DETERMINE EXTENT AND KIND OF PROTECTION REQUIRED.
- 2) VERIFY DIMENSIONS OF EXISTING IN FIELD, WHERE EXISTING CONDITIONS ARE FOUND TO BE IN CONFLICT WITH THE CONTRACT DOCUMENTS AND EXISTING DRAWINGS, NOTIFY ARCHITECT FOR CLARIFICATION. DO NOT PERFORM WORK RELATED TO CONFLICTING CONDITIONS UNTIL CLARIFICATION HAS BEEN OBTAINED.
- 3) WORK TO BE DEMOLISHED: COMPLETELY REMOVE MATERIALS AND ITEMS SHOWN TO BE DEMOLISHED. DEMOLISHED MATERIALS BECOME CONTRACTOR'S PROPERTY AND MUST BE REMOVED FROM SITE.
- 4) WORK TO BE SALVAGED: CAREFULLY REMOVE, PROTECT, AND STORE FOR FURTHER USE. MATERIALS AND ITEMS SHOWN TO BE SALVAGED ARE FOR REUSE IF IN UNDAUNTED CONDITION. IF NOT NEEDED FOR OTHER USE BY THE OWNER, THEY BECOME THE CONTRACTOR'S PROPERTY AND MUST BE REMOVED FROM SITE.
- 5) WORK TO BE RETAINED: TAKE NECESSARY PRECAUTIONS TO PREVENT MOVEMENT, SETTLEMENT, DAMAGE AND COLLAPSE OF THE WORK TO REMAIN IN PLACE DURING AND AFTER SELECTIVE DEMOLITION WORK AND DURING AND AFTER SUBSEQUENT NEW CONSTRUCTION WORK. PROVIDE TEMPORARY PROTECTION SUPPORTS AND BRACING TO MAINTAIN WORK IN PRESENT CONDITIONS, POSITION AND STABILITY. USE SUITABLE MATERIALS OF APPROPRIATE DESIGN AND SUFFICIENT STRENGTH, SIZE AND DIMENSIONS.
- 6) SEQUENCE OF REMOVAL: ESTABLISH A SEQUENCE OF REMOVAL, SO AS NOT TO PUT EXCESSIVE LOAD AND DEFORMATION ON THE EXISTING STRUCTURE DURING INSTALLATION OF EQUIPMENT.
- 7) WHERE PIPING OR CONDUIT IS NOT ACCESSIBLE (OR PASSES INTO AREAS OF NON-CONSTRUCTION) AND CAN REMAIN IN WITHOUT IMPACTING WORK OF ANY DIVISION, CAP AT EACH END AND ABANDON IN PLACE. REMOVE ANY WORK THAT IS ABANDONED IN PLACE IF REMOVAL IS REQUIRED BY THE WORK OF ANY TRADE.
- 8) DISCONNECT ELECTRICAL SYSTEMS PRIOR TO STARTING WORK.
- 9) PROTECTION: PROTECT MATERIALS ITEMS AND FINISHES SHOWN OR SPECIFIED TO BE RETAINED FROM DAMAGE AND SOILING.
- 10) ADJUSTING WHERE EXISTING WORK IS CUT, DAMAGED, OR MODIFIED PATCH AND REPAIR WITH MATERIAL TO MATCH EXISTING IN TYPE, QUALITY, APPEARANCE AND PERFORMANCE.
- 11) RESTORE AREAS LEFT EXPOSED AFTER DEMOLITION OR SALVAGE TO MATCH ADJACENT FINISH WHERE THEY ARE NOT COVERED BY NEW WORK.
- 12) ALL DEBRIS SHALL BE WET AT TIME OF HANDLING TO PREVENT DUST.
- 13) CALL FOR INSPECTION AT LEAST 24 HOURS BEFORE STARTING WORK.
- 14) REFER TO CONSULTANT DRAWINGS FOR ADDITIONAL DEMOLITION NOTES AND REQUIREMENTS.

## DEMOLITION GRAPHIC LEGEND

EXISTING CONSTRUCTION TO REMAIN	DEMOLISHED HARDSCAPE
LANDSCAPE TO BE REMOVED SEE LANDSCAPE DWGS FOR ADDITIONAL NOTES	DEMOLISHED FARMING
PROPERTY LINE	DEMOLISHED CEILING AND EXISTING LIGHT FIXTURE, DIFFUSERS AND OTHER DEVICES
EXTENT OF DEMOLITION	FRAMED BEARING WALL, PROTECT IN PLACE
DEMOLISHED PARTITION	

## GENERAL SELECTIVE DEMOLITION NOTES

- 1 DEMOLISH BIKE RACK
- 2 REMOVE SITE LIGHT AND DEMOLISH / REMOVE CONDUIT AND WIRING
- 3 DEMOLISH HARDSCAPE FOR REGRADING
- 4 REMOVE LANDSCAPE
- 5 DEMOLISH C&M WALL, KEEP FOUNDATION IN PLACE
- 6 SALVAGE BUILDING PLAQUE
- 7 REMOVE STRIPPING
- 8 DEMOLISH STAIR
- 9 DEMOLISH GATE
- 10 DEMOLISH WALL
- 11 PROTECT IN PLACE
- 12 DEMOLISH HANDRAIL
- 13 RETAIN LANDSCAPE
- 14 REMOVE FINISH SUBSTRUCTURE TO REMAIN
- 15 REMOVE FULL PANEL OF CONCRETE FOR IN ELEC. PULL BOX, SEE ELEC. OVERCUTTING SURFACE FINISH SHALL NOT BE ACCEPTED
- 16 PROTECT DRAINAGE CULVERT IN PLACE. REMOVE ASPHALT AS REQUIRED FOR FREE FLOWING DRAINAGE. SEE CIVIL DRAWINGS FOR ADDITIONAL DETAILS
- 17 DEMOLISH C&M WALL ALONG WITH FOUNDATION

SITE DEMOLITION PLAN 01  
SCALE: 3/32" = 1'-0"

GOLETA  
LIBRARY

CITY OF GOLETA

500 N Fairview Ave  
Goleta, CA 93117

Designer:  
JM | A+D

516 N Sepulveda Blvd.  
Marathon Beach, CA 90355  
310.648.8580  
www.jmactudio.com

Consultants:

kpff

Consultants:

UP  
STRUCT

Consultants:

INTERFACE  
ENGINEERING

Consultants:

JENSEN HUGHES

Issued For:

No. Description Date

100% DESIGN DEVELOPMENT 22 NOV 2024

90% CONSTRUCTION DOCUMENT 17 MAR 2025

ISSUED FOR PERMIT 20 MAR 2025

REV. CONSTRUCTION DOCUMENT 16 MAR 2025

ISSUED FOR PERMIT REVISION 1 08 AUG 2025

Seal & Signature



Sheet Number

DEMOLITION SITE  
PLAN

Project No. 2108 Sheet No.

Drawn By: Author  
Checked By: Designer  
Title: As Noted

D100

# GENERAL SELECTIVE DEMOLITION NOTES

- 1 DEMOLISH EXISTING INTERIOR PARTITION
- 2 DEMOLISH PART OF EXISTING WALL TO ACCOMMODATE NEW OPENING
- 3 DEMOLISH DOOR AND DOOR FRAME
- 4 REMOVE DOOR PANEL
- 5 DEMOLISH WINDOW AND FRAME
- 6 DEMOLISH STOREFRONT
- 7 DEMOLISH EXISTING PLUMBING FIXTURES
- 8 DEMOLISH EXISTING SLAB
- 9 DEMOLISH STRUCTURAL WALL, PRIOR TO REMOVING WALL, ERECT SHORING TO SUPPORT SPANNING MEMBERS. REFER TO STRUCTURAL DRAWINGS AND 02-41-00 "SELECTIVE DEMOLITION" FOR ADDITIONAL INFORMATION AND REQUIREMENTS FOR SHORING.
- 10 EXISTING DRAINLINE REMAINS

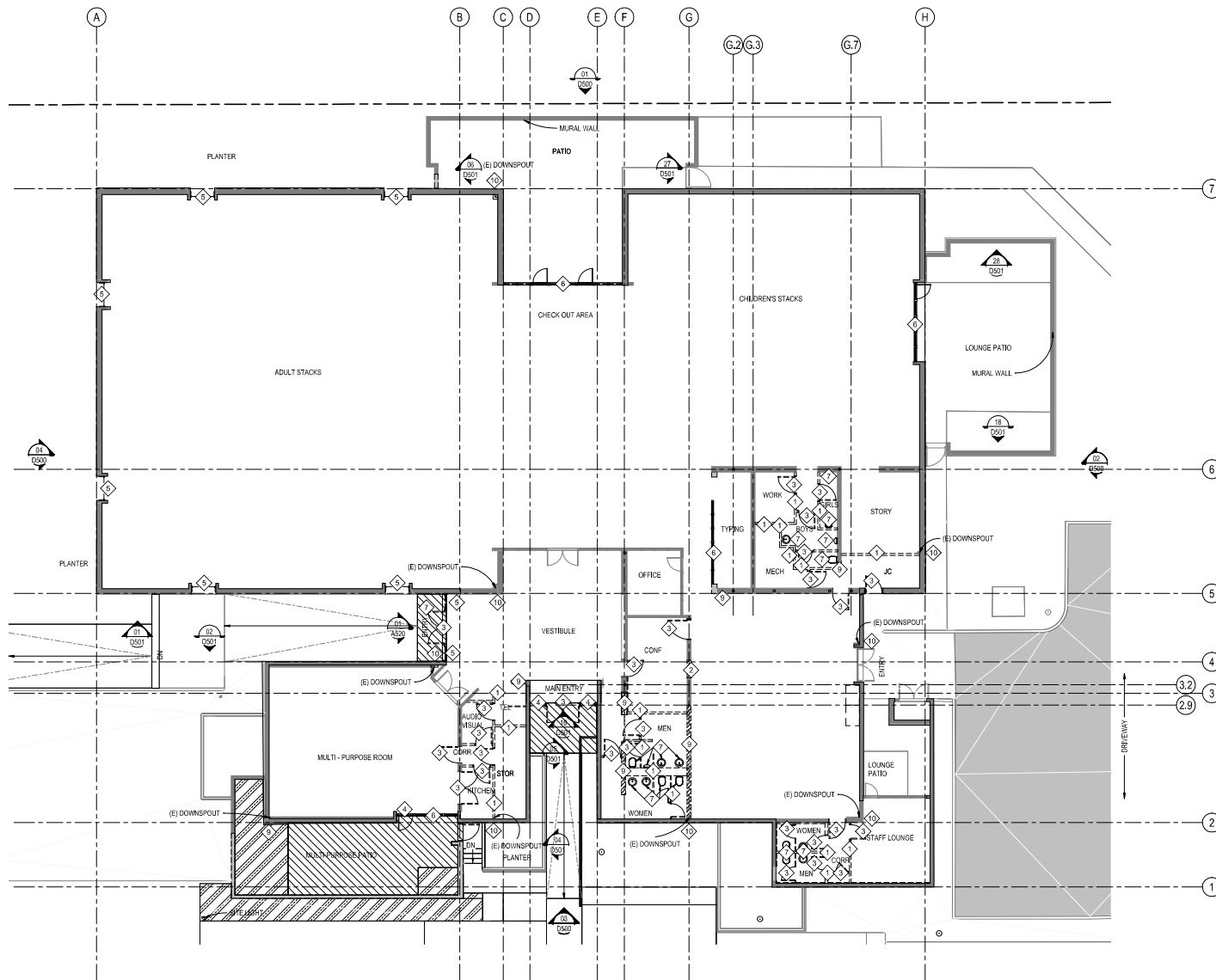
## INTERIOR DEMOLITION

# DEMOLITION GRAPHIC LEGEND

- EXISTING CONSTRUCTION TO REMAIN
- LANDSCAPE TO BE REMOVED SEE LANDSCAPE DRAWINGS FOR ADDITIONAL NOTES
- PROPERTY LINE
- EXTENT OF DEMOLITION
- DEMOLISHED PARTITION
- DEMOLISHED HARDSCAPE
- DEMOLISHED PARKING
- DEMOLISHED CEILING AND EXISTING LIGHT FIXTURE, DIFFUSER AND OTHER DEVICES
- FRAMED BEARING WALL, PROTECT IN PLACE

# SHEET NOTES

1. REFER TO D200 FOR TYPICAL DEMOLITION NOTES AND SITE DEMOLITION NOTES
2. REFER TO STRUCTURAL SET WHEN DEMOLISHING LOAD BEARING WALL.



DEMOLITION PLAN - FIRST FLOOR LEVEL 01  
SCALE: 1/8" = 1'-0"

GOLETA  
LIBRARY

CITY OF GOLETA

500 N Fairview Ave  
Goleta, CA 93117

Designer:  
JM | A+D

516 N Sepulveda Blvd.  
Marlborough, MA 01901  
(508) 484-8500  
www.jmarchitect.com

Consultant:

kpff

Consultant:

UPWARD  
STRUCTURAL

Consultant:

INTERFACE  
ENGINEERING

Consultant:

JENSEN HUGHES

Issued For:

No. Description Date

100% SCHEMATIC DESIGN 11 OCT 2024

100% PERMIT SUBMITTAL 22 NOV 2024

90% CONSTRUCTION DOCUMENT 07 MAR 2025

ISSUED FOR PERMIT 09 MAR 2025

100% CONSTRUCTION DOCUMENT 09 AUG 2025

ISSUED FOR PERMIT REVISION 09 AUG 2025

North Arrow

Seal & Signature



Sheet Number

DEMOLITION  
PLAN

Project No. 2108 Sheet No.

Drawn By: Author

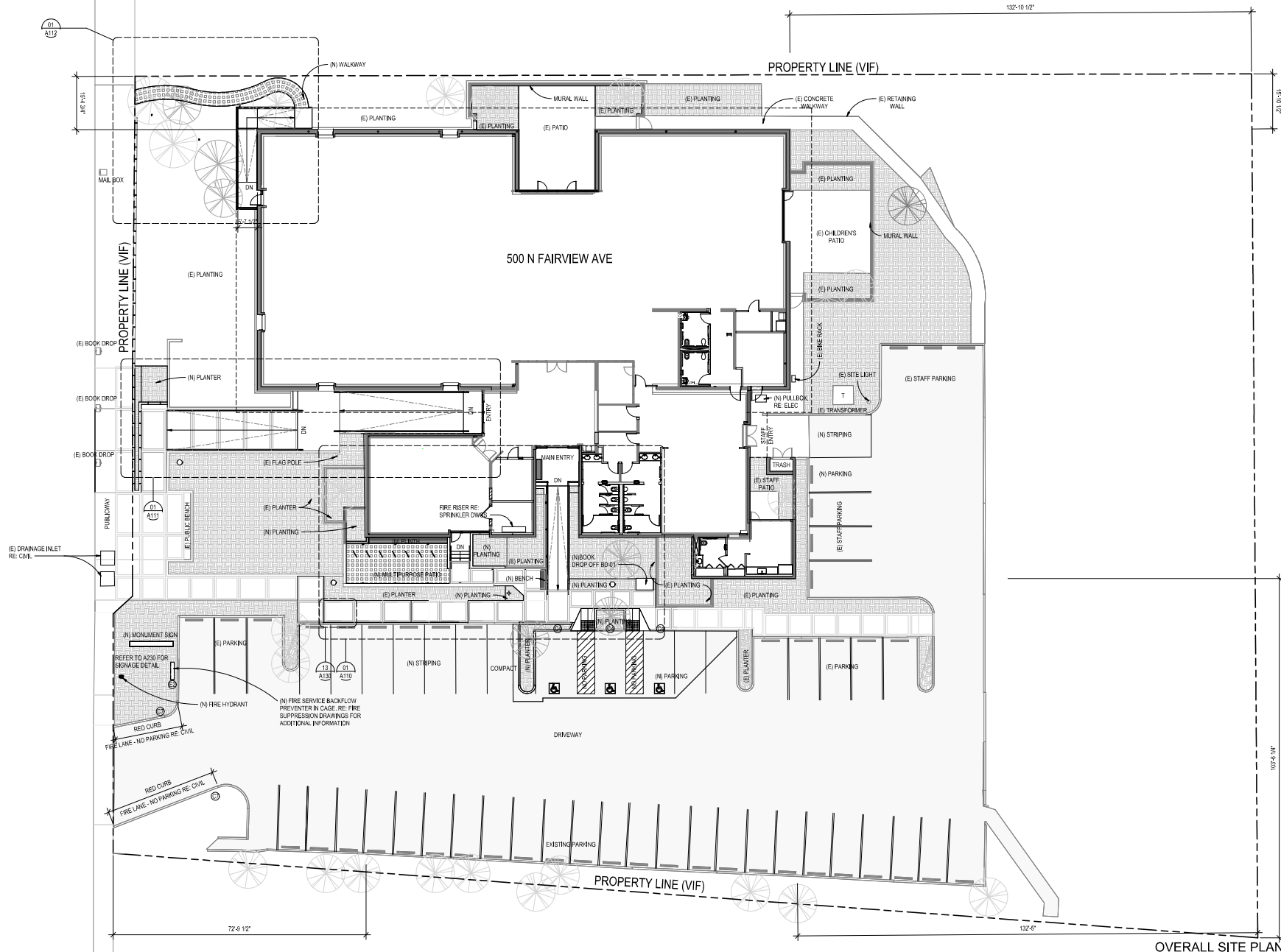
Checked By: Designer

Date: As Noted

D200

# OVERALL SITE PLAN

SHEET NOTES  
1) REFER TO A230 FOR ADDITIONAL SIGNAGE NOTES AND DETAILS



OVERALL SITE PLAN 01  
SCALE: 3/32" = 1'-0"

GOLETA  
LIBRARY

CITY OF GOLETA

500 N Fairview Ave  
Goleta, CA 93117

Designer:  
**JM | A+D**  
316 N Sepulveda Blvd.  
Marathon Beach, CA 90406  
(310) 484-3550  
www.JMAADstudio.com

Consultant:  
**kpff**

Consultant:  
**STUDIO**

Consultant:  
**INTERFACE  
ENGINEERING**

Consultant:  
**JENSEN HUGHES**

Issued For:	No.	Revision	Date
100% SCHEMATIC DESIGN	11	OCT 2024	
100% PERMIT APPLICATION	22	NOV 2024	
90% CONSTRUCTION DOCUMENT	27	MAR 2025	
ISSUED FOR PERMIT	30	MAR 2025	
100% CONSTRUCTION DOCUMENT	38	AUG 2025	
ISSUED FOR PERMIT REVISION 1	39	AUG 2025	

North Arrow



Overall Site Plan

Project No.: 24-09  
Drawn By: Author  
Checked By: Checker  
Date: 3/27/25

A100